

# Aspen Plant Scheduler™ Family

*Generate optimal production schedules to maximize profitability and meet service levels*

*Aspen Plant Scheduler Family is comprised of a three-tiered scheduling solution designed to address the varying degrees of scheduling complexity. Customers deploying these solutions realize significant benefits in the areas of increased throughput, reduced inventory and expediting costs, and improved customer service.*

<ul style="list-style-type: none"><li>• Generate optimal production schedules</li><li>• Improve on-time delivery performance by up to 5%</li><li>• Increase throughput by 1-5%</li><li>• Decrease manufacturing cycle times</li><li>• Reduce expediting costs</li><li>• Increase scheduler productivity with an easy-to-use interface</li></ul>	<hr/> <b>Aspen Plant Scheduler ..... Page 2</b> Provides basic finite capacity production scheduling with rapid implementation
	<hr/> <b>Aspen Plant Scheduler-Extended Automation (EA) ..... Page 4</b> Optimizes timing and sequence of the production schedule
	<hr/> <b>Aspen Plant Scheduler-Extended Optimization (EO) ..... Page 5</b> Holistic scheduling optimization for complex dependencies and constraints

## ||||||| The Challenge: Adapting to Change while Staying on Schedule

Process manufacturers are under pressure to maximize productivity from their assets, making optimal production scheduling a critical necessity to remain competitive. A number of factors must be considered simultaneously—capacity and material limitations, dependencies of sequenced changeovers, and scheduling of preventive maintenance. All of this must be done while keeping inventories to their minimum and ensuring that customer orders are ready to ship on time.

## ||||||| The AspenTech® Solution: Simulate Production to Keep up with Reality

*Aspen Plant Scheduler Family* enables companies to effectively simulate production capacity and evaluate production scenarios for meeting total demand. Additionally, the ability to link multi-stage production activities and customer orders provides real-time visibility of demand and manufacturing levels.

An important feature of *Aspen Plant Scheduler Family* is its ability to reconcile the inevitable differences between production plans and reality. It integrates with ERP, in-house systems, and other AspenTech applications to keep the schedule aligned with the most up-to-date information on customer orders, raw material receipts, and production activities.

Each tier of the solution builds upon the previous, so as the business complexity changes, the flexibility of the solution supports a right-fit for the current situation.

# Aspen Plant Scheduler

*Aspen Plant Scheduler* provides basic finite capacity production scheduling with rapid implementation. With an easy-to-use interface, schedulers are able to effectively simulate production capacity and evaluate production scenarios for meeting total demand. Additionally, the ability to link multi-stage production activities and customer orders provides real-time visibility of demand and manufacturing levels.

## ||||| Planning Board

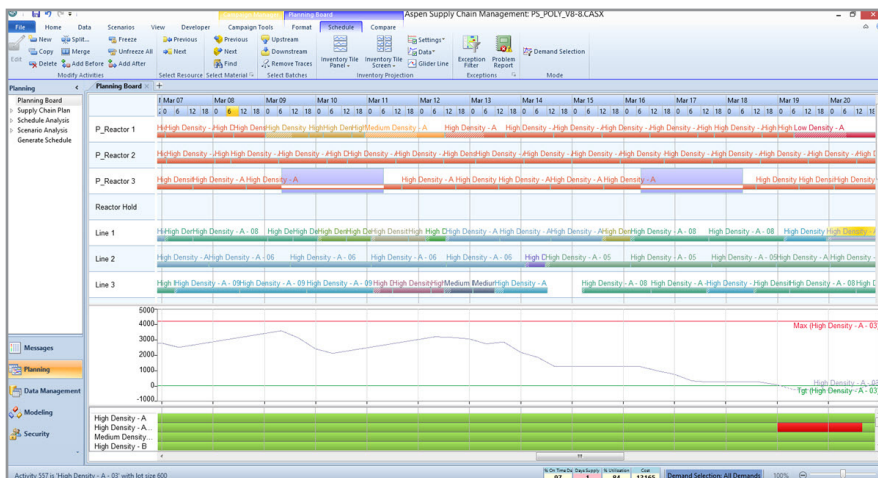
In all the *Aspen Plant Scheduler Family* of products, the schedule is readily viewed and manipulated via an interactive Gantt chart called the Planning Board. Drag-and-drop schedule modifications are accompanied by inventory projections and extensive exception reporting to assist the scheduler in visualizing the impact of changes, especially useful when dealing with non-routine events in real-time, such as unexpected spikes in demand, outages of raw material, or equipment breakdowns.

The Gantt chart provides drag-and-drop re-scheduling with active user assistance, giving the scheduler real time feedback on the feasibility of a schedule change. A color coded exception report on the lower portion of the screen alerts the user to any problems in the schedule, such as inventory target violations and stock outs, and displays a graph of material inventory levels and their changes as the production schedule advances.

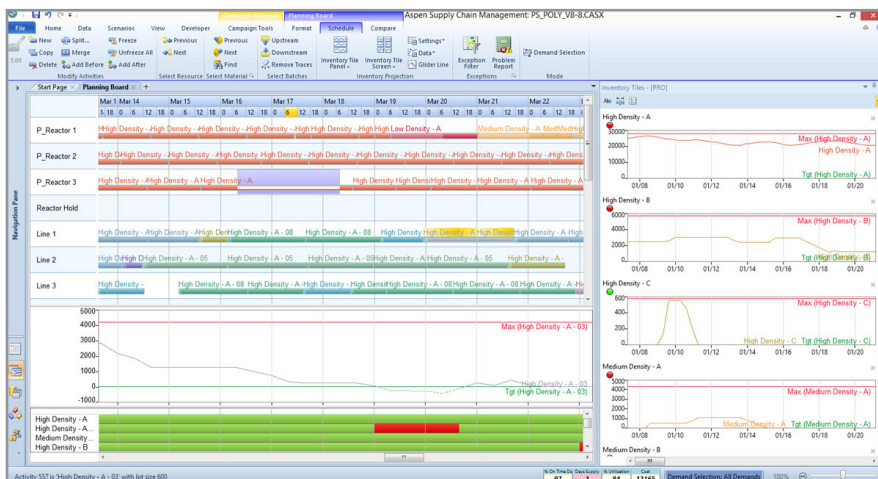
Material flow between multiple stages of production and the demand they fulfill are visualized on the Planning Board with the touch of a button. Production can be easily added, modified, or deleted and the schedule is instantaneously re-simulated to reflect updated timings and projected inventory positions.

## ||||| Inventory Projection Tiles

*Aspen Plant Scheduler* allows process manufactures to visualize inventory levels in real-time using highly customizable inventory tiles. These tiles allow for agile personalization of multiple inventory projections in order to facilitate the resolution of day to day business problems such as inventory run-outs. Schedulers can use the inventory tiles to eliminate the time consuming hunt for data and instead focus on optimizing their production.



The **Planning Board** enables schedulers to visualize the schedule at a glance as well as drill down into the details of each production activity. Problems in the schedule are easily identified via a color coded grid and active user assistance provides guidance on feasible schedule adjustments.



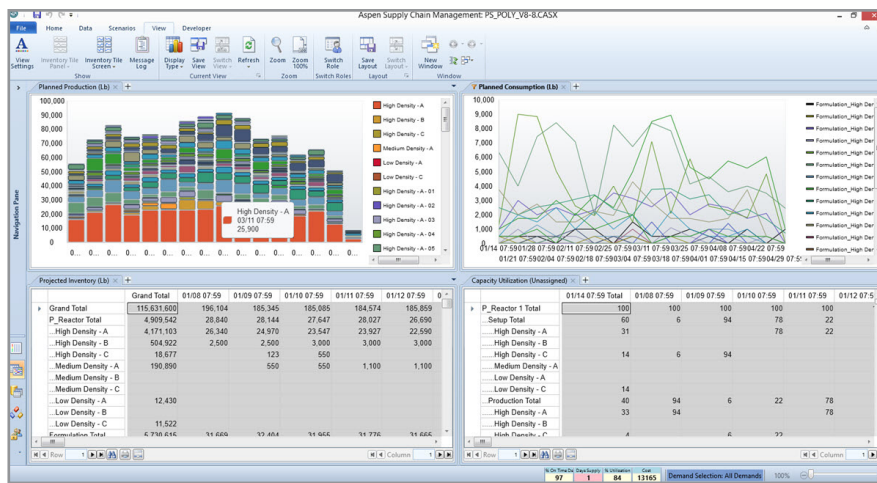
View inventory levels for specific products such as materials with problems, non-scheduled materials, raw materials, or warehouse space.

# Aspen Plant Scheduler

## Customizable Reports

Aspen Plant Scheduler Family boasts powerful and flexible reporting and visualization capabilities that enable schedulers to quickly hone in on the information they need. Favorite layouts and screen configurations can be saved and retrieved with a single click, personalizing the application to a user's specific business needs. Schedulers can view related information on the same screen and create or adjust the panes displayed on the fly, drastically reducing the number of steps required to investigate problems or compare data.

With enhanced data editing and filtering, you can efficiently edit model data directly in the tables visible on your screen. Two types of filters – global and the familiar Excel column style – allow users to quickly hone in on the information they need. The global filters persist and apply to any data that is displayed, making it easy for the scheduler to quickly narrow their view to specific products or other data elements.



Flexible reporting with configurable panes that can be tabbed, docked, or floating.

## Aspen Plant Scheduler

### Function

- Basic finite capacity production scheduling addresses problems with simple material flow, inventory storage, static BOMs, and feed constraints
- Easy-to-use Gantt chart with real-time feedback on raw material availability, equipment constraints, and batch dependencies
- Advanced simulation to track production activities, capacity consumption, and inventory productions
- Industry leading user interface provides easy navigation and a Microsoft® look and feel

### Benefit

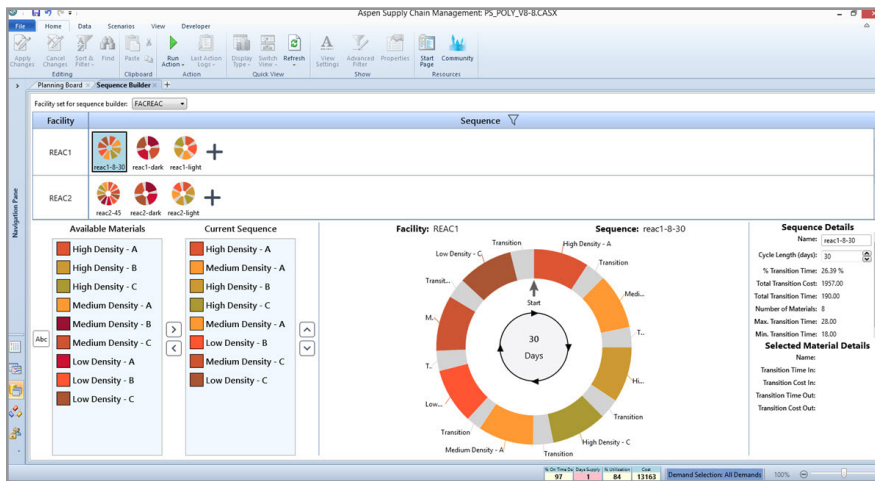
- Quick user acceptance and time to benefit
- Base-level scheduling solution that provides visibility, reporting, and simulation capabilities
- Create better schedules in a shorter amount of time
- Quickly discover and access advanced functions
- Make feasible schedule changes in response to an unexpected order or operational upset
- High performance when optimizing, resimulating the schedule, or manipulating large amounts of data

# Aspen Plant Scheduler - Extended Automation (EA)

**Aspen Plant Scheduler-EA** generates detailed plant production plans using advanced heuristics and solvers, creating an optimal short-term schedule of operations. While minimizing changeover, production, and inventory costs, Aspen Plant Scheduler-EA determines the precise timing and sequence of production activities throughout the plant. It works in finite capacity, so the production plans generated are feasible from both a capacity and material flow perspective, and are consistent with the strategic production plan.

## Campaign Manager

*Aspen Plant Scheduler-EA* includes the new Campaign Manager that allows you to easily define and save a preferred sequence or product wheel for each asset. This sequence becomes part of the “library” of product wheels that can be added or removed from the schedule in its entirety. Eliminate the inefficiency of manually creating the preferred sequence one activity at a time by automating a repeatable task. The Campaign Manager can be used to build the schedule for each asset and as an advanced starting point for powerful sequencing algorithms.



Quickly and easily create a schedule with your ideal production sequence

---

## Aspen Plant Scheduler-EA

### Function

- Campaign Manager layered on top of Aspen Plant Scheduler
- Easily define and save a preferred sequence or product wheel for each asset
- Can be used as an advanced starting point for powerful sequencing algorithms

### Benefit

- Improve scheduler efficiency with advanced campaign management tools and visualization
- Reduce off-spec production and transition costs by 20%
- Quickly see the impact of changes to the schedule

# Aspen Plant Scheduler - Extended Optimization (EO)

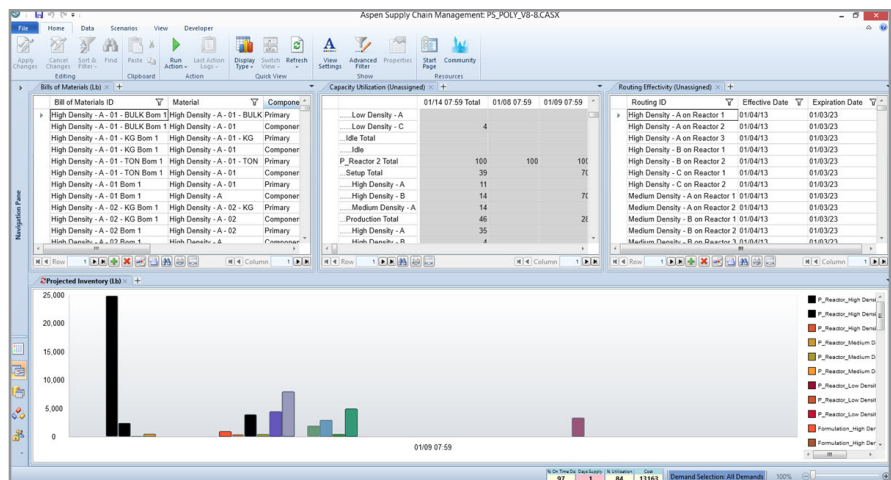
A requirement to creating optimal production schedules and sequencing is an understanding of a plant's supply and demand balance. *Aspen Plant Scheduler-EO* utilizes this unique perspective to create the optimal short-term plan and schedule of operations in the midst of numerous bottlenecks and constraints. Using both Mixed Integer/Linear Programming (MILP) optimization and advanced heuristics and solvers, Aspen Plant Scheduler-EO allows for the consideration and tradeoffs needed to deliver an economically optimal plan within the physical constraints of a particular production facility.

**Aspen Plant Scheduler-EO** generates an optimal short-term schedule for unit production that is consistent with the longer term group production plan in order to address the inevitable variability in actual versus forecasted customer orders. The solution is developed at the end-item level (e.g., a shippable, billable item), scheduled by start and stop times, or shift, day, or other finite time period.

## ||||| Planning Framework

In *Aspen Plant Scheduler-EO*, the planning framework synchronizes the planning model with the real-world situation inside your organization by importing data from various sources that describe your current operating conditions.

Data import uses standard integration to the *Aspen Supply Chain Data Repository* and collects items such as inventory status, current production, open orders, and schedule status.



Optimal schedule generation using Mixed Integer Linear Programming (MILP) can be added for full schedule generation or for optimization of a specific aspect of the schedule, e.g. trim optimization, blend recipe optimization, tank selection, etc.

## Aspen Plant Scheduler-EO

### Function

- Dynamic optimization capability layered on top of Aspen Plant Scheduler-EA
- Addresses the wide range of scheduling problems including complex setups and transitions
- Optimizes specific aspects of a schedule such as blend recipes or tank selection
- Considers routing and batch sizing problems
- Distribution scheduling capability linked to production scheduling

### Benefit

- Gain competitive advantage by adopting dynamic supplychain management practices
- Generates an optimal, capacity balanced initial schedule
- Out-of-the-box scheduling optimization capable of addressing high process and scheduling complexity
- Ensures synchronization between the business processes for agility to respond to changing market conditions

### ||||||| aspenONE® Supply Chain Management

*Aspen Plant Scheduler Family* is a part of AspenTech's integrated aspenONE Supply Chain Management suite. AspenTech's aspenONE solutions are designed to align with the key industry business processes, providing manufacturers the capabilities they need to optimize operational performance, make real-time decisions, and synchronize the plant and supply chain.

### ||||||| Empower Your Company to Succeed

aspenONE Supply Chain Management delivers an integrated supply chain solution that increases customer service levels, reduces inventory, and reduces overall supply chain costs. AspenTech's Professional Services team helps customers maximize benefits by effectively deploying solutions and best practices in demand management, planning and scheduling, and distribution. Unparalleled industry knowledge combined with comprehensive solution expertise has allowed AspenTech to deliver thousands of successful implementations, driving increased margins for our customers. Combined with our world-class 24/7 technical support service, flexible training options, and local language product availability, AspenTech provides the resources to enable your company to meet and exceed its business objectives. To learn more, visit [www.aspentech.com/pro\\_services](http://www.aspentech.com/pro_services).

### ||||||| About AspenTech

AspenTech is a leading supplier of software that optimizes process manufacturing—for energy, chemicals, engineering and construction, and other industries that manufacture and produce products from a chemical process. With integrated aspenONE® solutions, process manufacturers can implement best practices for optimizing their engineering, manufacturing, and supply chain operations. As a result, AspenTech customers are better able to increase capacity, improve margins, reduce costs, and become more energy efficient. To see how the world's leading process manufacturers rely on AspenTech to achieve their operational excellence goals, visit [www.aspentech.com](http://www.aspentech.com).



#### **Worldwide Headquarters**

Aspen Technology, Inc.  
20 Crosby Drive  
Bedford, MA 01730  
United States

phone: +1-781-221-6400  
fax: +1-781-221-6410  
[info@aspentech.com](mailto:info@aspentech.com)

#### **Regional Headquarters**

**Houston, TX | USA**

phone: +1-281-584-1000

**São Paulo | Brazil**

phone: +55-11-3443-6261

**Reading | United Kingdom**

phone: +44-(0)-1189-226400

**Singapore | Republic of Singapore**

phone: +65-6395-3900

**Manama | Bahrain**

phone: +973-17-50-3000

For a complete list of offices, please visit  
[www.aspentech.com/locations](http://www.aspentech.com/locations)